

**WHAT'S ON  
MAY - SEP 24**

# GRAND JUNCTION

AT ST MARY MAGDALENE'S  
PADDINGTON



**GRAND JUNCTION AT ST MARY MAGDALENE'S,  
A VENUE FOR COMMUNITY, ARTS, AND HERITAGE**



## Welcome!

Welcome to our spring/summer programme of activities and events. As I write we are busy planning our **summer exhibition**, exploring the stories and histories of the Middle Eastern and North African communities in West London. This exhibition will be the culmination of two years of the Our Shared Heritage project. Funded by National Lottery Heritage Fund, it has given us the opportunity to explore and celebrate the experiences of diverse local communities, connecting these to the heritage of St Mary Magdalene's. You can drop by and visit the exhibition for free throughout July.

If you've not caught the hilarious **Arabs Are Not Funny** night at Grand Junction before, there is another chance in May with a stellar line-up of comedians making us laugh with their own unique perspective on their Arab heritage and beyond. Rising star **Muireann Bradley** also visits in May, bringing her extraordinary mix of Country Blues, Folk, and Americana. Soon to support The Last Dinner Party and described by Radio 2 Folk Show's Mark Radcliffe as "a fascinating and intoxicating blend of the contemporary and traditional", **Frankie Archer** joins us in June, bringing her distinctive fusion of Northumbrian fiddle, synths, and drum tracks.

For families, **Ten in a Bed** is Half Moon Theatre's brilliant new show, visiting us after school in May.

This term we have added even more classes to our programme, so if you want to get fit with **Zumba**, bring your little one to **Baby Sing and Sign**, or learn new drawing techniques, then check out the programme. And hurry - there is still time to join our **community choir** in time for their July performance. Finally, our **Summer Festival** returns once again in July; with activities for everyone, it is a great chance for the community to enjoy the summer together!

We hope you see you at Grand Junction in the coming months.

Lucy Foster  
Creative and Community Director

## GRAND JUNCTION EVENTS AT A GLANCE



### Spring/Summer Calendar of Events

- 1 MAY Karim Kamar
- 1 MAY Free Lunchtime Heritage Tour
- 2 MAY Communal Resistance by Young Shubbak
- 14 MAY Ten in a Bed family show by Half Moon Theatre
- 11 MAY Art Party
- 18 MAY Free Lunchtime Highlights Tour
- 24 MAY Arabs Are Not Funny Comedy Night
- 5 JUN Free Lunchtime Highlights Tour
- 7 JUN Frankie Archer
- 24 JUN Young Actors end of term performance
- 4 – 25 JUL Summer Exhibition
- 5 JUL Open Mic Night – A Night of Arabic Music
- 8 JUL Grand Junction community choir performance
- 13 JUL Art Party
- 13 JUL Free Lunchtime Highlights Tour
- 16 JUL To The Table: free community meal and activities
- 20 JUL Community Festival
- 23 JUL Chapel tour
- 13 JUL Free Lunchtime Highlights Tour
- 5 AUG Summer Holiday Project for Children
- 15 AUG 4EVA Outdoor Concert
- 18 SEP Open house festival
- 21 SEP Open house festival
- 24 SEP Zola Jesus

## MUSIC AND PERFORMANCE HIGHLIGHTS FOR SPRING/SUMMER 2024



### KARIM KAMAR

1 May, 8pm, £15 + BF

Classical pianist and composer takes to the Grand Junction stage to perform his new album, *The Heart is an Empty Vessel*.

Presented by Bird On The Wire



### COMMUNAL RESISTANCE BY YOUNG SHUBBAK

2 May, 6.30pm, £8 / £6 Concession

Join us for a night of curated performances amplifying marginalised voices in an evening to come together, share experiences, and explore the power of community as a tenant of resistance.

See our website for full lineup.

Presented by Grand Junction and Young Shubbak as part of Elixir Festival 2024



### MUIREANN BRADLEY

18 May, 8pm, £16.50 + BF

Irish singer-songwriter makes her Grand Junction debut for an evening of Country Blues, Ragtime Blues, Folk, Roots and Americana.

Presented by Bird On The Wire



### ARABS ARE NOT FUNNY COMEDY NIGHT

24 May, 8pm, £17 + BF

Don't let the name of this night fool you! Join us in May as the legendary comedy night returns to Grand Junction, featuring a lineup of top comedians from the Arab world and surrounding regions.

See our website for the full lineup.

Presented by Arts Canteen and Grand Junction



### FRANKIE ARCHER

7 June, 8pm, £16 incl. BF

The folk star brings her unique blend of synths, drum tracks and earthy Northumbrian fiddle to West London.

Presented by Nest Collective

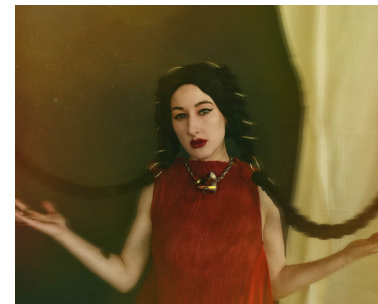


### OPEN MIC NIGHT - A NIGHT OF ARABIC MUSIC

5 July, 7.30pm, £12 + BF

An intimate night of music and culture from the Arabic-speaking world. Join us for a relaxed evening immersed in the beautiful sounds of the region as we get ready for another incredible line-up of performers recreating some of your favourite Arabic songs live.

Presented by MARSM UK



### ZOLA JESUS

24 Sept, 8pm, £25 + BF

See the Russian-American singer-songwriter Nika Roza Danilova at Grand Junction. Her music style combines electronic, industrial, classical, goth, and experimental rock influences.

Presented by Bird On The Wire



## TOURS, TALKS & EXHIBITIONS

### **SHARED HERITAGE** **OUR SHARED HERITAGE AT GRAND JUNCTION**

Grand Junction's Our Shared Heritage project, a two-year programme funded by the National Lottery Heritage Fund, explores and celebrates the stories and experiences of diverse local communities, fostering cultural exchange and breaking down barriers to engage with the Victorian heritage of St Mary Magdalene's. Collaborating closely with the community through a variety of activities to explore and share their own stories, including personal, inherited, and historical of arrival and settlement in West London along the timeline of our building's history, 1878 to the present day. This term marks the project's final phase, featuring a range of activities and events, including a community festival, guided tours, and a concluding exhibition at Grand Junction, running from 4 – 25 July.

#### TOURS

##### General highlights heritage tour

Wednesdays 12:00-13:00  
Saturdays 12.30-13.30  
Wed 1st May, Sat 18 May, Wed 5 June,  
Wed 3 July, Sat 13 July, Wed 7 August

Join our friendly and knowledgeable Volunteer Guides for a Highlights Tour and learn about St Mary Magdalene's rich Victorian heritage. Appreciate the great vision of architect G. E. Street who employed the best artists and crafts people of the day to create this Gothic Revival masterpiece, and marvel at the building's recent extensive restoration work.

##### Chapel tour

Sun 23 June, 12.30-13.30

Located in the Undercroft of St Mary Magdalene's Church, The Chapel of St Sepulchre is a complete work of art in itself. When the founder and first vicar Fr West died in 1893 the chapel was created as a memorial to him. An early work by the architect Sir Ninian Comper, the enormous amounts of carved stone, stained glass, gilding, and ornamental paintwork take us back in time to the 15th century. Join us to learn about the heritage of this hidden gem and its recent restoration.

#### OPEN HOUSE FESTIVAL

Wed 18 and Sat 21 September

We are delighted to once again be participating in the London-wide Open House Festival, with two days of talks and tours of the building come along to learn more about the art, architecture, and history of our Grade I listed building.

#### EXPLORE OUR HERITAGE ONLINE

Grand Junction volunteers collect and preserve the important history of our building and its surrounding area.

These can be found on our specifically created heritage pages on our website: [grandjunction.org.uk/heritage](http://grandjunction.org.uk/heritage)

Follow @stmarymagschapel Instagram to learn more about the newly restored chapel of St Sepulchre

# SUMMER EXHIBITION AT GRAND JUNCTION

Join us for a **FREE** exhibition celebrating the stories from London's Middle Eastern and North African communities

**4 JULY -  
25 JULY**  
(Mondays - Saturdays,  
10am - 4pm)



SCAN THE  
QR CODE FOR  
DETAILS ABOUT  
EXHIBITION  
EVENTS

In the Undercroft (basement) at Grand Junction

## COMMUNITY @GRAND JUNCTION



### GRAND JUNCTION'S CHOIR PERFORMANCE

Mon 8 July, 18:30

Join us for a fun and free evening of music as our community choir takes to the stage!



### TO THE TABLE

Tue 16 July, 6-8 pm. Free. Booking required.

Enjoy engaging in creative activities and share delicious free food with your neighbours in a celebration of what it is to live in a community. Celebrating our different cultures, we eat together, and you have the opportunity to take part in a creative workshop. Activities will be available for children. There will also be an opportunity to look around our summer exhibition.



### GRAND JUNCTION SUMMER FESTIVAL

Sat 20 July, 14.00 – 17.00

Free. All are welcome.

Come along for a fun-filled afternoon of free tea, cake, and activities, with the chance to explore our exhibition and discover stories from the local Middle East and North Africa community.



### 4EVA OUTDOOR CONCERT

Thu 15 August, 2pm-7pm

Join us for an outdoor concert showcasing nostalgia, love, loyalty, identity and perseverance through Live Looping, UK Grime, and Rap Electronica. Acclaimed Audiovisual Artist Jasmine Kahlia is bringing the 4EVA to Grand Junction alongside collaborators, including Redz Man. The show features live looping, short films, and poetry exploring the artists' complex journeys through life and their interdisciplinary approach drawing on storytelling, rap, and film.

#### Want to get involved?

**Focus group Saturday 18 May 10am-12pm:** We are calling anyone interested in music, dancing or performing to join a focus group to help shape the future of the audiovisual outdoor performance 4EVA.

**Workshops 12 and 13 August 10am-12pm:** Work alongside Audiovisual Artist Jasmine Kahlia to create and build live loops from scratch and learn how to beat box. In this two-day workshop, you will build a track alongside others to be performed onstage at the outdoor showcase on 15 August as part of the final show 4EVA.

## ADULT CLASSES

Sign up to a class at Grand Junction to try something new, learn a skill, or meet new people. All classes are free or low-cost.

### COMMUNITY ENGLISH (PRE-ENTRY & ENTRY 1)



Mondays and Wednesdays,  
22 April - 26 June, 9.30 – 11.30  
Free, Registration required. Entry Level 1  
A beginner's level course designed to improve your listening and speaking skills in everyday life situations. You will also learn basic grammar and develop your vocabulary. The class runs twice a week on Mondays and Wednesdays.



### LANGUAGE CAFÉ (ENGLISH)



Mondays, 15 April – 1 July, 11.45 -12.45  
Free. Registration required  
Friendly and welcoming sessions to meet local people, improve your English, and gain confidence. Discuss a new topic each week and enjoy a class trip once a term.  
Everyone welcome! Once a week on Mondays.

### KNIT & STITCH FREESTYLE



Mondays, 22 April - 24 June,  
13:00-15:00  
Whether you're a seasoned seamstress or a novice with a needle, this welcoming circle invites all skill levels to gather and share the joy of crafting and textiles. This is an open space to come together each week to exchange ideas, patterns, and techniques, creating a supportive environment where everybody can both learn and contribute. There is no teacher for this session, it is self-led by the participants.

### LUNCHTIME YOGA



Mondays, 22 April - 24 June,  
13.00 – 14.00  
Fees: £2 per session. Registration required  
A beginner-friendly class focusing on strength, flexibility, balance and breathing to boost physical and mental wellbeing. Yoga supports sleep by reducing stress, anxiety and increasing happiness. The class is open to all levels and takes place once a week on Mondays.



### GRAND JUNCTION COMMUNITY CHOIR



Mondays, 15 April – 8 July, 18.00 - 19.00  
Free. Registration required  
Join us to sing some great music and meet other people in your community. Singing experience is not necessary - everyone is welcome!  
In partnership with Westbourne Community Champions

### WOMEN'S YOGA



Tuesdays, 23 April - 25 June,  
9.00 - 10.00  
Fees: £2 per session.  
Registration required  
A women's only, beginner-friendly class, focusing on strength, flexibility, balance and breathing to boost physical and mental wellbeing. The class is open to all levels and takes place once a week on Tuesdays.

### COMMUNITY ART FOR WELLBEING



Tuesdays, 23 April - 11 June,  
10.30 - 12.30  
Free, Registration required  
Open to anyone interested in experimenting with different methods of drawing, painting, and collage whilst learning about the artists who inspired these approaches. Once a week on Tuesdays.



### DRAW AND DISCUSS



Tuesdays, 23 April – 18 June,  
18:00 – 19:30  
Free, Registration required .  
Insert some art into your Tuesday evenings! Join our Free beginner-friendly art class to explore a variety of approaches to drawing, painting and 3D work. Get creative and meet new people in your local area in a welcoming atmosphere over tea and biscuits. Led by an experienced art and ESOL teacher, this class is very suited to anyone learning English, but all are welcome.

### MINDFULNESS AND BREATHWORK FOR WELLBEING



Wednesdays, 24 April - 26 June, 12 - 13.30  
Free, Registration required  
An introductory course focusing on staying free from depression, stress, anxiety, and pain. You will learn how to breathe and move toward a mindful body and mind. Once a week on Wednesdays.

Thank you to our partners and funders who help to deliver this programme: Westminster Adult Education Service, Westbourne Community Champions, Westminster Community Priorities Programme and Westminster Healthy Communities Fund.



### ZUMBA FOR ALL



Wednesdays, 17 April - 17 July,  
13:15-14:15  
Free, Registration required  
Join us for our new 60-minute Zumba lunchtime class on Wednesdays. Come and get fit, meet new people and improve your mental wellbeing. This class is open to all adults.

### HEALTH HACKS



Wednesdays, 5th June - 17 July,  
14:15-15:15  
Do you want to start walking 20 mins each day, join a local keep fit class or sign up to do a Couch to 5K? Wherever you're at with your health journey, Health Hacks is a new workshop to support your physical activity goals in a safe and supportive way.

### AN INTRODUCTION TO VOLUNTEERING



17 April & 3 July  
Free, Registration required  
A short course to help you understand the basic principles of volunteering, and the key practices underlying volunteering your time and skills.



## FAMILY, YOUNG PEOPLE & EARLY YEARS

To book a place on our after-school clubs, please visit our website.  
For questions and more information email our Young People and Families Manager,  
Joanne Merritt-Hall – [joanne@grandjunction.org.uk](mailto:joanne@grandjunction.org.uk)



### BABY SING AND SIGN

Mondays, 22 April - 8 July, 10:00 – 11:00  
Free - **booking required**

Bring your little one to our new sing and sign class led by a professional teacher and musician. This fun interactive class for age 0-4 years will involve toys, puppets, songs, actions and signing.



### BABY MASSAGE

Sign up for the next six week courses -  
Thursdays, 6 June – 11 June &  
19 Sep – 24 Oct 10.30 - 11.30am  
Free - **booking required**

A six week course is for parents / carers and babies aged 0-6 months only. This free massage course teaches you key techniques to sooth your baby and aid relaxation and sleep.



### ART PARTY

Saturdays, 11 May, 15 June, 13 July  
10 – 12 noon  
Free – drop in

Our Saturday morning family workshop, where we take over Grand Junction with art activities, toys, games and more for the whole family to enjoy. These creative drop-in sessions are idea for young children aged 0-10.



### JUNCTION JUNIORS

Mondays (Term time only),  
15 April - 1 July, 15.45 - 17.15  
Free - **booking required**

A weekly creative after-school club for children aged 7-11 (school years 3-6). Delivered by professional theatre facilitators, your child will be led through fun and educational drama activities, creating a piece of new performance.

*No experience necessary. Open to all abilities.*



## YOUNG ACTORS

Mondays (Term time only), 18.00 - 19.30

Free - **booking required**

We're not accepting young people this term due to show rehearsals. Sign up for September now!  
 Young Actors, A weekly creative youth workshop for ages 11-17 (school years 7 – 12). Led by professional youth theatre directors, your child will build confidence and develop performance skills. No experience necessary; all abilities welcome!  
 Come see our show on Monday 24 June at 7.30pm - it's free.



## GREEN KIDS CLUB

Tuesdays (Term time only),  
 16 April - 2 July, 16.00 - 17.30

Free - **booking required**

After school club for children aged 7-11 (school years 3-6). This club aims to educate and inspire young minds to think about recycling, environmentalism, food growing, greening and improving their local area and become young activists!



## DANCE FOR GIRLS

Tuesdays (term time only)  
 23 April – 2 July, 16.30 – 18.00

Free - **booking required**

For ages 11 - 16

This 90-minute session will introduce the group to fun creative and contemporary dance techniques and will encourage the group to work together to create dances. This class is open to all girls, whether you have danced before or not. All levels welcome.



## PLAY IN A WEEK – SUMMER HOLIDAY PROJECT

5 Aug – 9 Aug, 10 – 15.30 daily.

Free - **booking required**

For ages 6 - 11

Drama, games, acting, and art – Join our weeklong project lead my drama professionals and create your very own performance on the final day. Lunch included. \*This project is for children on benefit related free school meals (pupil premium)

## FAMILY THEATRE



## TEN IN A BED BY HALF MOON THEATRE

Tues 14 May, 16.30

Pay What You Decide

A show about having fun, even when the world is at its most daunting. Is it a bed? Or a boat? Or a giant slice of toast? For Naz and Iggy and their eight friends, their bed is a place where imagination can fill their tummies with tasty treats and take them to familiar warm places. Well, sometimes.

For ages 3 - 8 and their grownups.

We never want the price of a ticket to be a barrier for anyone who wants to experience the magic of theatre at Grand Junction. That is why we have introduced a Pay What You Decide scheme on all our family theatre shows. When booking a ticket you'll be given a choice of four different ticket options:

- **£5 Pay What You Decide Ticket (Recommended)** – £5 per person.
- **£2 Pay What You Decide Ticket** – £2 per person.
- **£7 Pay More If You Can** – £7 per person.
- **Family of 4 Ticket Deal** –

There is a Pay What You Decide family ticket available for the three price points mentioned above.

All you have to do is choose the price bracket that best suits your current budget.

See our website for more details.



Let's eat & drink @

# GRAND JUNCTION CAFE

We are excited to be launching our summer menu including iced coffees, teas and fresh summer Salads.

OPEN EVERY DAY  
\*9AM TO 4PM

Visit now at little  
Venice by the canal

follow us on instagram  
@Grandjunction.cafe



## VOLUNTEER



Be part of the volunteer team at Grand Junction! We are looking for volunteers to work as stewards at our music events, as learning assistants, marketing support, administration, heritage researchers, and more.

Visit our website for further details or email [volunteering@grandjunction.org.uk](mailto:volunteering@grandjunction.org.uk)

## VISITING THE CHURCH

### VISITOR GUIDES

**Ten Best Things:** On arrival pick up our guide to the ten best things to explore in the church.

**Young Explorers:** Pick up our Grand Junction Young Explorer activity booklet. With fun facts, an explorer trail, and colouring activities, it will keep the whole family busy!

## PLANNING YOUR VISIT

The church will be open for visits at the following times between May – September 2024  
Mondays: 10am – 4pm  
Wednesdays 10am – 4pm

Very occasionally we are not able to open at the above times. If you are travelling to visit us, we recommend ringing ahead to check. Please also contact us if you are interested in visiting the church at a different time, as we may be able to accommodate you.

Email [info@grandjunction.org.uk](mailto:info@grandjunction.org.uk) or call 0207 266 8258



## FINDING US

Grand Junction at St Mary Magdalene's, Rowington Close, London W2 5TF

### Warwick Avenue station

(Bakerloo line) – 0.3 miles

### Royal Oak station

(Hammersmith & City, Circle) – 0.3 miles

### Paddington station

(National Rail services, Circle, District, Bakerloo, Hammersmith & City, and Elizabeth line) – 1 mile

Buses that stop nearby - 18, 27, 28, 36, 46, and 6





## WORSHIP



The Parish of St Mary Magdalene is a living worshipping community, part of the Church of England, and the proud home of Grand Junction.

On Sundays we meet at 10am for a parish mass.

On weekdays small reflective services are held in the undercroft chapel.

Visitors and newcomers are always welcome.

For the latest updates about these and other parish events see the parish website [st-mary-magdalene.co.uk](http://st-mary-magdalene.co.uk)

For enquiries about the Christian faith or events (including baptisms, wedding services, and funerals) contact The Rev'd Natasha Woodward (priest-in-charge) on [natasha.woodward@london.anglican.org](mailto:natasha.woodward@london.anglican.org) or call 020 3490 5305.

## HIRE



Interested in hiring one of our spaces?

The spaces in the church and new building are suitable for conferences, meetings, performances, parties and much more.

Contact: [Elena@grandjunction.org.uk](mailto:Elena@grandjunction.org.uk)

## ABOUT PADDINGTON DEVELOPMENT TRUST



Grand Junction is run by Paddington Development Trust, a local, non-religious charity. PDT was formed in 1998 by local residents who remain at the heart of everything we do. Our mission is to bring people together and support them to take charge of their own individual and shared futures. We do this through volunteering projects, supporting people into employment, self-employment, training, and through projects that enhance the built environment and provide additional facilities for local people.

Further information at: [www.pdt.org.uk](http://www.pdt.org.uk)

## BOOKING:

Online booking and further details at: [www.grandjunction.org.uk](http://www.grandjunction.org.uk)

Enquiries: [info@grandjunction.org.uk](mailto:info@grandjunction.org.uk) or 020 7266 8258

For the latest updates on new events and news, sign up to our newsletter at [www.grandjunction.org.uk/contact](http://www.grandjunction.org.uk/contact)

Follow us on Social Media    @grandjunctionw2

**Grand Junction** at St Mary Magdalene's, Rowington Close, London W2 5TF



Ellie Kurttz, Anna Kunst, James Whitely,  
Ollie Denton, EYEKONTAKT



City of Westminster



pdt  
paddington  
development trust



Supported using public funding by  
**ARTS COUNCIL  
ENGLAND**